



AROMATHERAPIC  
APPROACH TO SALON  
TREATMENTS

5 SYSTEMS TO TAKE  
CARE OF AND GET RID  
OF THE PRINCIPAL  
ANOMALIES OF HAIR  
AND SCALP



naturatech™

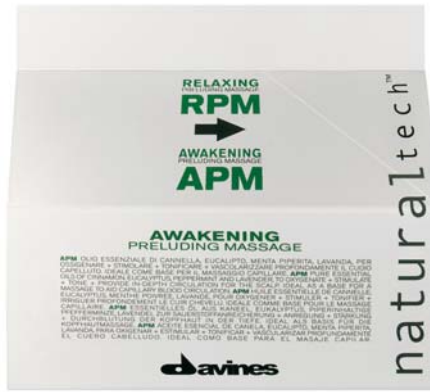
naturaltech™

product  
type

active  
ingredients

use

notes



## PRELUDING MASSAGE

MIXTURE OF ESSENTIAL  
OILS WITH AWAKENING  
AND RELAXING ACTION

AWAKENING: ESSENTIAL  
OILS OF CINNAMON, MINT,  
LAVENDER

RELAXING: ESSENTIAL OILS  
OF SWEET ORANGE, BITTER  
ORANGE, AND LEMON

APPLY THE DESIRED  
PRE-TREATMENT ON  
THE SCALP AND  
MESSAGE FOLLOWING  
INSTRUCTIONS OF  
THE TECHNICAL  
DOSSIER.

THE BOX CONTAINS THE  
TWO PRE-TREATMENT  
PRODUCTS.

PH 5.5



WELL-BEING  
DE STRESS  
SHAMPOO

DELICATE CLEANSER RICH IN MINERAL SALTS AND VITAMINS FOR EACH TYPE OF HAIR.

YOGURT, WHEAT PROTEINS, CALENDULA EXTRACT, VITAMINS A, B, C, D, E.

APPLY ON DAMP HAIR AND MASSAGE. RINSE WELL AND REPEAT IF NECESSARY.

FOR A DAILY USE MAINLY DURING SUMMER OR IN A VERY HOT CLIMATE.  
PH 5.5



WELL-BEING  
DE STRESS  
CONDITIONER

HYDRATING CREAM FOR NORMAL HAIR. HIGH CONCENTRATION OF MINERAL SALTS AND HYDRATING AGENTS. EXCELLENT FOR AFTER SUN TREATMENT.

YOGURT, MARINE ALGAE, MINERALS.

APPLY SOME PRODUCT ON THE HAIR AND COMB THROUGH. RINSE WELL.

EXCELLENT TREATMENT TO PROTECT HAIR EXPOSED TO ENVIRONMENTAL STRESS. SUITABLE AS DETANGLER AND LIGHT CONDITIONER.  
PH 5.5



WELL-BEING  
DE STRESS  
BE-PHASE  
SHELTER

BI-PHASE SPRAY FOR BODY AND HAIR THAT HYDRATES AND PROTECTS FROM ENVIRONMENT POLLUTANTS. FOR A SOFT AND SILKY SKIN.

WHEAT PROTEINS, DIMETHICOLON, UV-FILTERS

APPLY ON HAIR AND SKIN BEFORE SUN TANNING OR TO PROTECT THE HAIR IN POLLUTED ENVIRONMENTS.

TO PROTECT HAIR FROM CHLORINE, SALTNES AND SMOG.  
PH 5.5



WELL-BEING  
DE STRESS  
YOGURT  
BUFFER GEL

GELLY PRODUCT RICH ON REMINERALIZING INGREDIENTS AND PROTECTIVE AGENTS, INDICATED FOR NORMAL OR DEHYDRATED HAIR.

SETTING AGENTS, YOGURT, HYDROLIZED COLLAGEN

APPLY EVENLY ON WASHED AND TOWEL-DRIED HAIR, COMB ALONG THE HAIR TO THE TIPS AND DRY. APPLY ON DRY HAIR AS PROTECTIVE AGENT. USE MORE FOR A WET LOOK.

PH 4.5

**product  
type**

**active  
ingredients**

**use**

**notes**



**NOURISHING  
MOISTURE  
REMEDY SHAMPOO**



**NOURISHING  
VEGETARIAN  
MIRACLE**

**product  
type**

RICH CLEANSING CREAM  
ELIMINATING STYLING  
PRODUCT RESIDUES  
WHILE RESPECTING THE  
HAIR STRUCTURE AND  
PREVENTING THE HAIR  
DEHYDRATION.

NOURISHING AND  
HYDRATING MASK FOR  
DRY HAIR. IT FORTIFIES  
THE HAIR STRUCTURE  
AND MAKE THE HAIR  
SHINY AND SOFT.

**active  
ingredients**

RICE PROTEINS, MALLOW  
AND CALENDULA EXTRACT,  
MARINE ALGAE

MARINE ALGAE, AVOCADO,  
RICE PROTEINS

**use**

SOFTLY MASSAGE ON  
WET HAIR AND RINSE.  
REPEAT THE  
OPERATION IF  
NECESSARY.

APPLY FROM ROOT TO  
TIP. LET IT PROCESS  
10 MINUTES AND  
RINSE WELL.

**notes**

SPECIALLY SUITABLE FOR  
DEHYDRATED AND  
CHEMICALLY TREATED  
HAIR. SUITABLE ALSO FOR  
A DAILY USE.  
PH 5.5

EXCELLENT WEEKLY  
TREATMENT FOR VERY DRY  
AND DECOLORED HAIR.  
PH 5.3



NOURISHING  
LIVING  
ENZYME INFUSION

STRONG  
RESTRUCTURING  
INFUSION SPECIALLY  
SUITABLE FOR SPLIT  
ENDS AND TANGLED  
HAIR. IT CAN BE APPLIED  
FROM ROOT TO TIP ALSO  
DURING THE MASSAGE  
WITH PRE-TREATMENTS

ENZYMES, PANTHENOL,  
SERICIN

APPLY FROM ROOT TO  
TIP. LET IT PROCESS  
SOME MINUTES AND  
RINSE WELL

IF THE PRODUCT CANNOT  
BE RINSED WITH WATER  
ONLY, ADD SOME SHAMPOO  
DROPS.  
PH 7.0



NOURISHING  
ROYAL JELLY  
HAIR PLUS

MINERAL AND VITAMIN  
ENHANCER FOR SCALP  
AND HAIR. EXCELLENT  
RESTRUCTURING  
PRODUCT FOR OPAQUE  
AND DEHYDRATED HAIR.

AMINO ACIDS, VITAMIN B5,  
VITAMIN C, FOLIC ACID,  
MINERAL SALTS

POUR THE SOLUTION  
INTO THE POWDER  
BOTTLE. APPLY THE  
PRODUCT ON SKIN AND  
MASSAGE. DO NOT  
RINSE. THE PRODUCT  
CAN BE APPLIED ON THE  
HAIR LENGTHS TOO.

SUITABLE FOR EVERY TYPE  
OF HAIR, ALSO IN CASE OF  
DANDRUFF AND SEBUM  
EXCESS  
PH 4.4

**product  
type**

**active  
ingredients**

**use**

**notes**



NOURISHING  
LIVING ENZYME INFUSION PLUS



NOURISHING  
HAIRBUILDING  
PAK

product  
type

RESTRUCTURING SPRAY,  
PROTECTIVE,  
CONDITIONING AND  
HYDRATING FOR ALL HAIR  
TYPES.

RESTRUCTURING AND  
NOURISHING PACK FOR  
WEAK HAIR. JUST ONE  
PRODUCT LEAVES HAIR  
STRONG AND SOFT.

active  
ingredients

SOD ENZYME  
COTTON BLOOM  
WHEAT PROTEINS  
OLIVE OIL PEG-7 ESTERS

SMALL AMINO ACIDS,  
PROPOLIS, WHEAT PROTEIN

use

APPLY ONTO WASHED AND  
TOWELLED-DRY HAIR. COMB AND  
PROCEED TO DRY. CAN BE APPLIED  
AT EVERY WASH.

AFTER SHAMPOOING SQUEEZE OUT  
EXCESS WATER AND APPLY A SMALL  
AMOUNT OF THE PRODUCT TO HAIR  
LENGTHS. COMB AND LEAVE ON FROM  
5 TO 15 MINUTES ACCORDING TO HAIR  
CONDITION. CAN BE APPLIED WITH OR  
WITHOUT A SOURCE OF HEAT. RINSE  
THOROUGHLY AND PROCEED WITH  
STYLING.

notes

PH 5,5

BODY AND RESISTANCE OF  
HAIR TO HARSH BLOW-DRYING  
AND COMBING, LEAVES HAIR  
SOFT AND SHINY

PH 5,3



**ENERGIZING  
VITAMIN  
ACTIVIST SHAMPOO**

DELICATE CLEANSER FOR FRAGILE HAIR. IT HAS A FORTIFYING ACTION ON SCALP.

ESSENTIAL OILS OF CINNAMON, MINT, CAJEPUT, WHEAT PROTEINS

SOFTLY MASSAGE ON WET HAIR AND RINSE. REPEAT IF NECESSARY.

ENERGIZING EFFECT ON THE MIND TOO THANKS TO THE PRESENCE OF ESSENTIAL OILS

PH 6.5



**ENERGIZING  
VITAMIN  
ACTIVIST GEL**

NON-RINSE GEL WITH FORTIFYING AND STIMULATING ACTION. SUITABLE FOR FRAGILE AND LIFELESS HAIR

ESSENTIAL OILS OF CINNAMON, LAVENDER, EUCALYPT, TISSUE RESPIRATION FACTOR

AFTER SHAMPOOING APPLY ON THE SCALP AND MASSAGE DO NOT RINSE

IT CAN BE USED IN COMBINATION WITH ENERGIZING VITAMIN ACTIVIST LOTION ON THIN LIFELESS HAIR

PH 3.4



**ENERGIZING  
ENERGY  
ACTIVIST LOTION**

ENERGIZING CONCENTRATED LOTION SUITABLE IN CASE OF HAIR FRAGILITY OR HAIR FALLING.

ESSENTIAL OILS OF CAJEPUT, SAGE, ALOE, HYDROLYZED KERATIN

AFTER SHAMPOOING APPLY ON THE SCALP AND MASSAGE DO NOT RINSE

IT CAN BE USED IN COMBINATION WITH ENERGY VITAMIN ACTIVIST GEL ON THIN AND LIFELESS HAIR

PH 5.5

**product  
type**

**active  
ingredients**

**use**

**notes**

naturaltech™

product  
type

active  
ingredients

use

notes



## PURIFYING ANTI DANDRUFF SHAMPOO

TREATING SHAMPOO IN  
CASE OF HAIR WITH A  
PROBLEM OF  
PERMANENT OR  
TEMPORARY DANDRUFF.

SELENIUM SULPHIDE, PINE  
AND SAGE ESSENTIAL OILS.

SOFTLY MASSAGE ON  
WET SCALP. RINSE.  
REPEAT IF  
NECESSARY.

HIGHLY EFFECTIVE  
TREATMENT TO BE USED IN  
ALTERNATION TO THE WELL-  
BEING SHAMPOO ACCORDING  
TO THE TECHNICAL DOSSIER  
INSTRUCTIONS.  
PH 4.7



## PURIFYING ANTI DANDRUFF GEL

PURIFYING AND  
REFRESHING GEL. IT  
ELIMINATES DEAD CELLS  
FROM THE SCALP AND  
DISINFECTS IT DEEPLY.

GLYCOLIC AND SALICYLIC  
ACID, ESSENTIAL OILS OF  
CAJEPUT, PINE AND SAGE,  
PANTHENOL, KERATIN,  
PYROCTONE OLAMINE.

MASSAGE ON THE  
SCALP. LET IT PROCESS  
10-15 MINUTES. RINSE

EXCELLENT PREVENTION  
PRODUCT TO BE USED  
BEFORE AND AFTER  
SHAMPOOING.  
PH 3.6



REBALANCING  
SEBUM CONTROL  
SHAMPOO

DELICATE CLEANSER  
THAT REBALANCES THE  
SEBUM PRODUCTION  
AND KEEPS THE SCALP  
CLEAN.

AZELOGLYCINE, BIRCH,  
BURDOCK, AND HAWTHORN  
EXTRACTS.

APPLY TO THE SCALP  
AND EMULSIFY.  
MASSAGE SOFTLY  
AND SHORTLY. RINSE  
AND REPEAT IF  
NECESSARY.

IT TAKES TWO OR THREE  
WEEKS BEFORE THE DESIRED  
RESULT IS OBTAINED SINCE IT  
ACTS ON SEBUM PRODUCTION.  
PH 5.6



REBALANCING  
SEBUM CONTROL  
LOTION

REBALANCING AND  
PURIFYING LOTION FOR  
THE SCALP.

AZELOGLYCINE, LEMON  
AND SAGE ESSENTIAL OILS

AFTER SHAMPOOING  
APPLY ON SCALP AND  
MASSAGE SOFTLY. DO  
NOT RINSE

EXCELLENT PRODUCT WITH  
PLEASANT FRAGRANCE.  
PH 5.5

product  
type

active  
ingredients

use

notes



DETOXIFYING ENVIRONMENTAL DAMAGE RECOVERY MUD

DETOXIFYING ENVIRONMENTAL DAMAGE RECOVERY SHAMPOO

DETOXIFYING ENVIRONMENTAL DAMAGE RECOVERY CONDITIONER

product type

MUD - CREAM WITH DETOXING AND PURIFYING PROPERTIES FOR HAIR STRESSED BY POLLUTING AGENTS AND IMPURITIES.

SPECIFIC ANTI-POLLUTION SHAMPOO THAT ELIMINATES THE RESIDUES OF SMOG, CHLORINE AND HARD WATER FROM HAIR. HELPS REMOVE **DETOXIFYING EDR MUD.**

CONDITIONING AND MOISTURISING CREAM, RESTORES HAIR STRESSED BY POLLUTANTS. PROVIDES LONG-LASTING PROTECTION OF HAIR, LEAVING IT HEALTHIER AND CLEANER FOR LONGER.

active ingredients

CLAY, LIPOSOMES

EDTA, PHYTIC-ACID, ATOLIGOMER

CHITOSAN, CHROMAN, LIPOSOMES

use

APPLY TO WET HAIR AND SCALP. LEAVE TO ACT FOR 10-15 MINS WITH OR WITHOUT MOIST HEAT SOURCE. REMOVE USING WATER THEN USE **DETOXIFYING EDR SHAMPOO.**

MASSAGE GENTLY INTO WET HAIR, RINSE AND REPEAT THE APPLICATION IF NECESSARY.

AFTER SHAMPOO APPLY TO THE WET HAIR WITH A GENTLE MASSAGE. COMB AND LEAVE FOR 5 MINUTES. RINSE CAREFULLY.

notes

CAN ALSO BE APPLIED ON SCALPS WITH EXCESSIVE SEBUM PRODUCTION, FOR AN ABSORBING EFFECT THAT REDUCES THE SEBUM pH. 7.7

PH 5.4

PH 3.6



## RELAXING PRELUDING MASSAGE AWAKENING PRELUDING MASSAGE

RPM PURE ESSENTIAL OILS OF BITTER ORANGE, SWEET ORANGE, LAVENDER AND LEMON TO STIMULATE A DEEP SOOTHING + RELAXING + PURIFYING ACTION. IDEAL AS A BASE FOR A MASSAGE TO AID CAPILLARY BLOOD CIRCULATION.

APM PURE ESSENTIAL OILS OF CINNAMON, EUCALYPTUS, PEPPERMINT AND LAVENDER, TO OXYGENATE + STIMULATE + TONE + PROVIDE IN-DEPTH CIRCULATION FOR THE SCALP. IDEAL AS A BASE FOR A MASSAGE TO AID CAPILLARY BLOOD CIRCULATION.

APPLY THE CONTENTS OF THE PHIAL CAREFULLY TO THE SCALP. MASSAGE IN FOR ABOUT 10 MINUTES. PROCEED WITH FOLLOWING TREATMENT.

PACKAGE  
12+12 PCS 6 ml 0.20 FL.OZ.

naturaltech™



# WELL BEING SYSTEM

A YOGURT-BASED PRODUCT RANGE DESIGNED FOR NORMAL HAIR. THESE PRODUCTS ARE SUITABLE FOR DAILY USE AND HAVE NO HARMFUL EFFECTS ON THE HAIR. SPECIFIC ACTIVE PRINCIPLES FORM A PROTECTIVE FILM ON THE KERATIN STRUCTURE AND DEFEND THE HAIR FROM ATMOSPHERIC POLLUTION AND ATTACK FROM FREE RADICALS. THE RANGE CONSIST OF THREE PRODUCTS:

## WELL BEING DE STRESS MUESLI & YOGURT SHAMPOO pH 5.5



DETERGENT FOR NORMAL HAIR ENRICHED WITH YOGURT AND WHEAT PROTEIN, WITH CONDITIONING AND NUTRITIONAL PROPERTIES. SUITABLE FOR FREQUENT WASHES IN AS MUCH AS IT PROTECTS THE HAIR DURING WASHING.

YOGURT: NUTRITIONAL AND VITAMINISING  
WHEAT PROTEIN: CONDITIONING AND MOISTURISING ACTION  
EXTRACT OF CALENDULA AND HOPS: SOOTHING ACTION

APPLY TO DAMP HAIR AND MASSAGE. RINSE AND REPEAT.  
SUITABLE FOR FREQUENT WASHES.

PACKAGE  
250 ML / 8.3 FL.OZ.  
1000 ML / 33.6 FL.OZ.

## WELL BEING DE STRESS CREAM YOGURT CONDITIONER pH 5.5



A MOISTURISING CREAM FOR NORMAL OR DRY HAIR. ITS SPECIFIC FORMULA IS DESIGNED TO FEED THE HAIR WITH ESSENTIAL MINERALS AS WELL AS OFFERING A DEEP NUTRITION THANKS TO THE YOGURT. THE EXTRACT OF RED ALGAE MOISTURISES THE KERATIN STRUCTURE, OFTEN AFFECTED BY POLLUTION AND HARSH ATMOSPHERIC CONDITIONS.

YOGURT: NUTRITIONAL AND VITAMINISING  
RED ALGAE: MOISTURISERS  
MINERAL SALTS: MINERALISING ACTION  
UV FILTERS: HAIR PROTECTION

APPLY TO **TOWEL DRIED HAIR** FOLLOWING THE WELL BEING DE STRESS MUESLI & YOGURT SHAMPOO. LEAVE FOR A COUPLE OF MINUTES THEN RINSE THOROUGHLY.

PACKAGE  
150 ML / 5.1 FL.OZ.  
1000 ML / 33.6 FL.OZ.

naturaltech™



## WELL BEING DE STRESS BE-PHASE SHELTER pH 5.5



TWO PHASE SPRAY PRODUCT FOR BODY AND HAIR THAT MOISTURISES AND PROTECTS HAIR FROM ATMOSPHERIC POLLUTION. THE PRODUCT IS EASILY AND QUICKLY ABSORBED. THE WHEAT PROTEINS DEEPLY MOISTURISE AND CONDITION SKIN AND HAIR. PARTICULARLY SUITED FOR PREVENTION OF THE PHENOMENA KNOWN AS SPLIT ENDS. TO BE SHAKEN WELL BEFORE USE, SO THAT TWO PHASES, WATERY AND OILY, BECOME PERFECTLY MIXED.

WHEAT PROTEIN: MOISTURISING, CONDITIONING ACTION.  
DIMETHICONOL: SHINING AND PROTECTIVE SILICON.

TO BE SPRAYED FREELY ONTO THE **SKIN AND HAIR**.

### PACKAGE

250 ML / 8.3 FL.OZ.

## WELL BEING DE-STRESS YOGURT BUFFER GEL pH 4.5



DESCRIPTION GELLY PRODUCT RICH ON REMINERALIZING INGREDIENTS AND PROTECTIVE AGENTS, INDICATED FOR NORMAL OR DEHYDRATED HAIR.

IT EFFECTIVELY PROTECTS HAIR FROM SUN RAYS, POLLUTION, SEA, POOL. EASY TO ELIMINATE; DO NOT LEAVE RESIDUES. TO DETOXYFY AND DEEPLY REMINERALIZE.

### PROPERTIES

ACTIVE INGREDIENTS  
SETTING AGENTS: IT PROTECTS FROM SUN RAYS, POLLUTION, POOL, SEA.  
YOGURT: BRINGS ESSENTIAL VITAMINS AND MINERAL SALTS  
HYDROLIZED COLLAGEN: GIVES VOLUME AND TEXTURE

HOW TO USE IT  
APPLY EVENLY ON WASHED AND TOWEL-DRIED HAIR, COMB ALONG THE HAIR TO THE TIPS AND DRY. APPLY ON DRY HAIR AS PROTECTIVE AGENT. USE MORE FOR A WET LOOK.

WHEN TO USE IT  
DURING SUN EXPOSURE TO PROTECT AND DEFINE SOFTLY YOUR HAIR. TO GIVE THE HAIR A WET EFFECT.

PACKAGE  
250ML / 8.3 FL.OZ.

naturatech™



# NOURISHING SYSTEM



## NOURISHING MOISTURE REMEDY SHAMPOO

MRS RICE PROTEIN + EXTRACT OF MARROW, CALENDULA, ALTHEA + SEAWEEDS TO DELICATELY CLEANSE AND RESTRUCTURE DRY HAIR AND SCALP.

HOW TO USE: APPLY MRS TO SCALP USING THE APPLICATOR SUPPLIED AND DELICATELY MASSAGE IN. WORK OVER FULL LENGTH OF HAIR. RINSE THOROUGHLY. IF NECESSARY, REPEAT TREATMENT.

PACKAGE  
250 ml 8.3 FL.OZ.



## NOURISHING VEGETARIAN MIRACLE

VM RICE PROTEIN + AVOCADO + SEAWEEDS TO NOURISH, ADD MOISTURE AND RESTRUCTURE HAIR IN DEPTH.

HOW TO USE: APPLY VM EVENLY TO HAIR LENGTH AND ENDS AND MASSAGE IN GENTLY. WAIT FOR 10 MINUTES, THEN RINSE CAREFULLY.

PACKAGE  
200 ml 6.8 FL.OZ.

naturaltech™





## NOURISHING ROYAL JELLY HAIR PLUS

RJHP AMINOACIDS + VITAMINS B1, B2, B12, C, + FOLIC ACID + CALCIUM, PHOSPHORUS,  
POTASSIUM, COPPER FOR BRITTLE, DRY AND STRESSED HAIR CAUSED BY  
ENVIROMENTAL AND CHEMICAL AGGRESSIONS.

HOW TO USE: POUR THE SOLUTION 1+ INTO THE + 2 FLACON AND SHAKE WELL. APPLY  
THE PRODUCT TO SCALP AND DELICATELY MASSAGE IN. APPLY, IF DESIRED, TO FULL  
HAIR LENGTH.

PACKAGE  
8 ml 0.27 FL.OZ.



## NOURISHING LIVING ENZYME INFUSION

LEI ENZYMES + PANTENOL + SERICIN TO NOURISH AND PROTECT HAIR IN-DEPTH.  
HOW TO USE: APPLY FROM ROOTS TO ENDS AND COMB THROUGH. WAIT FOR A FEW  
MINUTES. RINSE CAREFULLY.

PACKAGE  
20 ml 0.68 FL.OZ.

naturaltech™





## NOURISHING LIVING ENZYME INFUSION PLUS

### DESCRIPTION

RESTRUCTURING SPRAY, PROTECTIVE, CONDITIONING AND HYDRATING FOR ALL HAIR TYPES.

### PROPERTIES

HIGHLY RESTRUCTURING SPRAY ABLE TO NOURISH, HYDRATE AND PROTECT THE HAIR BOTH AT A CUTICULAR AND CORTEX LEVEL. AMONGST ITS ACTIVE INGREDIENTS CAN BE FOUND: THE SOD ENZYME (SUPER OXIDE DISMUTASE) WHICH HAS AN ANTI-RADICAL EFFECT; WHEAT PROTEINS WHICH PROTECT THE HAIR FROM ATTACKS BY EXTERNAL AGENTS AND RENDER IT SILKY; COTTON BLOOM, WITH ITS 7 OLIGOSACCHARIDES, WHICH PROTECT, REPAIR AND INCREASE THE STIMULATION OF KERATINIC SYNTHESIS AND AN OLIVE OIL DERIVATIVE FOR A DEEP EMOLLIENT ACTION. LEIPLUS CAN BE USED BOTH ON FINE AND MEDIUM TO THICK HAIR THANKS TO THE NEW GENERATION SILICONES WHICH CARRY OUT A PROTECTIVE AND POLISHING ACTION WITHOUT MAKING THE HAIR HEAVY. THE ACID PH INCREASES THE CONDITIONING ACTION AND THE SHINE OF THE HAIR.

### ACTIVE INGREDIENTS

**SOD ENZYME:** THE SUPER OXIDE DISMUTASE IS A POWERFUL ANTI-RADICAL AGENT AND IS ONE OF THE FEW ACTIVE ENZYMES ON THE HAIR.

**COTTON BLOOM:** ASSOCIATION OF 7 RARE AND SPECIFIC OLIGOSACCHARIDES FOR THE CAPILLARY FIBRE (FRUCTOSE, GLUCOSE, INOSITOL, SACCHAROSE, MELEZITOSE, TREHALOSE AND TREHALULOSE). IT IS A COMPLEX EXTRACTED FROM COTTON WITH REMARKABLE AND NUMEROUS PROPERTIES: IT PROTECTS AND REPAIRS HAIR DAMAGED BY ENVIRONMENTAL FACTORS, BY SMOG, BY CHEMICAL AGRESSIONS, BY MECHANICAL STRESS AND BY UV RAYS. IT HAS THE ABILITY TO INCREASE THE SYNTHESIS OF KERATIN AND THEREFORE STRENGTHEN THE HAIR AND IT HAS A COMPACTING EFFECT ON THE CUTICLE FOR MORE SHINY, EASY TO COMB AND HYDRATED HAIR.

**WHEAT PROTEINS:** INCREASE HAIR HYDRATION, SILKINESS AND CREATE A PROTECTIVE FILM WHICH PROTECTS THE HAIR.

**OLIVE OIL PEG-7 ESTERS:** EMOLLIENT ACTION.

### HOW TO USE IT

APPLY ONTO WASHED AND TOWELLED-DRY HAIR: SEPARATE THE HAIR INTO LOCKS OF ABOUT 2 CM AND SPRAY 3 OR 4 TIMES OVER THE WHOLE LOCK AT A DISTANCE OF ABOUT 30 CM. COMB AND PROCEED TO DRY. CAN BE APPLIED AT EVERY WASH.

### RESULT

THE HAIR APPEARS SHINY, SOFT, NOURISHED AND PROTECTED.  
VISIBLE RESULTS ALREADY FROM THE FIRST APPLICATION.

### PACKAGING

12ML / 0.40FL.OZ

naturaltech™





## NOURISHING HAIRBUILDING PAK

### DESCRIPTION

RESTRUCTURING AND CONDITIONING PACK FOR UNDER-NOURISHED, WEAK HAIR. JUST ONE PRODUCT FOR STRONG, SOFT HAIR.

### PROPERTIES

THANKS TO THE BLEND OF RESTRUCTURING AND CONDITIONING AGENTS, IT REINFORCES THE HAIR'S SHAFT AND LEAVES HAIR SOFT AND FULL OF BODY.

### ACTIVE INGREDIENTS

PROPOLIS: PROVIDES ESSENTIAL VITAMINS AND MINERALS

CONDITIONING AGENTS: SPECIFIC SILICONES WITH A DEEP-DOWN CONDITIONING ACTION

WHEAT PROTEIN: LEAVES A PROTECTIVE FILM

SMALL-SIZE AMINO-ACIDS: THESE PENETRATE THE HAIR, REINFORCING THE STRUCTURE AND MAKING IT MORE RESISTANT

### HOW TO USE IT

AFTER SHAMPOOING, ELIMINATE THE EXCESS WATER AND APPLY A WALNUT-SIZE AMOUNT OF THE PRODUCT TO HAIR. COMB AND LEAVE IN FOR 5 TO 15 MINUTES ACCORDING TO HAIR CONDITION. CAN BE APPLIED WITH OR WITHOUT A HEAT SOURCE. RINSE THOROUGHLY AND STYLE.

### WHEN TO USE

WHEN YOU NEED TO RESTRUCTURE AND NOURISH HAIR DEEP-DOWN

### RESULT

GIVES HAIR BODY AND RESISTANCE AGAINST AGGRESSIONS FROM BLOWDRYING AND COMBING, LEAVES HAIR SHINY AND SOFT

### PACKAGING

200 ml 6.7 FL.OZ.

naturaltech™

# ENERGIZING SYSTEM



## ENERGIZING VITAMIN ACTIVIST SHAMPOO

VAS PURE ESSENTIAL OILS OF EUCALYPTUS, CAJEPUT, MINT, CINNAMON + PROVITAMIN B5 TO DEEPLY CLEANSE AND REVITALISE THE SCALP FORTIFYING HAIR SHAFTS.  
HOW TO USE: WET HAIR AND MASSAGE IN A SMALL QUANTITY OF PRODUCT, RINSE. REPEAT AND WAIT A FEW MINUTES. RINSE.

PACKAGE  
250 ml 8.3 FL.OZ.



## ENERGIZING VITAMIN ACTIVIST GEL

VAG VITAMIN E + PROVITAMIN B + PHYTOBIODIN TO REVITALISE SCALP AND FINE, FRAGILE, THINNING HAIR.  
HOW TO USE: AFTER SHAMPOO, APPLY TO WHOLE SCALP AND GENTLY MASSAGE IN. COMB THROUGH. DO NOT RINSE.

PACKAGE  
150 ml 5.1 FL.OZ.

naturaltech™





## ENERGIZING ENERGY ACTIVIST LOTION

EAL PURE ESSENTIAL OILS OF SAGE AND CAJEPUT + EXTRACT  
OF CARDAMOM, GINGER, NETTLE, ANGELICA + GINKGO BILOBA  
+ KERATIN + PANTENOL TO STIMULATE, REGENERATE AND  
PURIFY SCALP AND FRAGILE, THINNING HAIR.

HOW TO USE: APPLY TO WASHED HAIR, MASSAGE INTO SCALP  
UNTIL COMPLETELY ABSORBED. DO NOT RINSE.

PACKAGE

12 PCS 6 ml 0.20 FL.OZ.

naturaltech™



# PURIFYING SYSTEM



## PURIFYING ANTI-DANDRUFF SHAMPOO

ADS ESSENTIAL OIL OF SIBERIAN FIR NEEDLE, CAJEPUT, SAGE + SELENIUM SULPHIDE + WHEAT PROTEIN TO EFFECTIVELY TACKLE DANDRUFF PROBLEMS.  
HOW TO USE: WET HAIR AND MASSAGE IN A SMALL AMOUNT OF PRODUCT, WAIT A FEW MINUTES. RINSE CAREFULLY.

PACKAGE  
250 ml 8.3 FL.OZ.



## PURIFYING ANTI-DANDRUFF GEL

ADG FRUITY  $\alpha$ -HYDROXYACIDS + PURE ESSENTIAL OIL OF SIBERIAN FIR NEEDLE, SAGE AND CAJEPUT + PANTENOL + PIROCTONE OLAMINE + ZINC PYRITHIONE TO EFFECTIVELY FIGHT ANY TYPE OF DANDRUFF.  
HOW TO USE: DISTRIBUTE CAREFULLY OVER WHOLE SCALP. DELICATELY MASSAGE IN. WAITING FOR 10-15 MINUTES. RINSE WITH CARE.

PACKAGE  
150 ml 5.1 FL.OZ.

naturaltech™



# REBALANCING SYSTEM



## REBALANCING SEBUM CONTROL SHAMPOO

AZELOGLYCINE: SEBUM-REGULATING AND ANTIBACTERIAL ACTION.  
BIRCH, BURDOCK AND HAWTHORN: PURIFYING ACTION.  
APPLY TO SCALP ONLY AND MASSAGE GENTLY FOR A SHORT PERIOD OF TIME.  
RINSE AND REPEAT.

IT IS ESSENTIAL FOR THE MASSAGE TO BE GENTLE AND SHORT  
IN ORDER TO AVOID STIMULATING THE SEBACEOUS GLANDS.  
ITS EFFICACIOUS YET NON-AGGRESSIVE ACTION MAKES IT IDEAL FOR DAILY USE.

PACKAGE  
250 ml 8.3 FL.OZ.



## REBALANCING SEBUM CONTROL LOTION

SCL PURE ESSENTIAL OIL OF LEMON, SAGE + DISTILLED HAMAMELIS + AZELAIC ACID TO  
PURIFY THE SCALP AND COUNTER SEBUM BUILD-UP.  
HOW TO USE: AFTER SHAMPOO, APPLY TO THE SCALP WITH A DELICATE MASSAGE. DO  
NOT RINSE. FOR BEST RESULTS, MAINTAIN A REGULAR TREATMENT PROGRAMME BY  
USING THE PRODUCT 3 TIMES A WEEK AT HOME.

PACKAGE  
12 PCS 6 ml 0.20 FL.OZ.

naturaltech™



# DETOXIFYING SYSTEM



## DETOXIFYING ENVIRONMENTAL DAMAGE RECOVERY MUD

### DESCRIPTION

MUD-CREAM WITH DETOXIFYING AND PURIFYING PROPERTIES, FOR HAIR STRESSED BY POLLUTING AGENTS AND IMPURITIES.

### PROPERTIES

HELPS TO DELICATELY ELIMINATE ALL IMPURITIES FROM HAIR AND SCALP. CLAY DELICATELY REMOVES THE IMPURITIES ACCUMULATED OVER TIME, WHILE LIPOSOMES WORK AS ANTI-OXIDANT. ITS SPECIAL FORMULATION ALSO HELPS ELIMINATE EXCESSIVE SEBUM FROM HAIR AND SCALP.

### ACTIVE INGREDIENTS

CLAY ATTACHES TO ALL IMPURITIES FROM SMOG AND HELPS ELIMINATE THEM. LIPOSOMES NEUTRALISE FREE RADICALS AND EXERTS A POWERFUL ANTI-OXIDANT ACTION.

### HOW TO USE

APPLY ON WET HAIR AND SCALP. LEAVE TO ACT FOR 10-15 MINUTES WITH\* OR WITHOUT WET HEAT SOURCE AND THEN TAKE OFF BY WASHING FIRST WITH WATER AND THEN WITH **DETOXIFYING ENVIRONMENTAL DAMAGE RECOVERY SHAMPOO**.

### RESULTS

TOGETHER WITH **DETOXIFYING ENVIRONMENTAL DAMAGE RECOVERY SHAMPOO** IT LEAVES HAIR PERFECTLY CLEAN AND SHINY, THANKS TO THE DEEP REMOVAL OF ALL EXISTING IMPURITIES. STRESSED HAIR LOOKS HEALTHY AND BRIGHT ONCE AGAIN.

### PACKAGE

50ML 1.69 FL.OZ X 6

\* A DAMP HEAT SOURCE ENHANCES MUD ACTION. THE USE OF IT IS RECOMMENDED IN CASE OF HIGHLY INTOXICATED OR EXTREMELY THICK HAIR.

naturaltech™



# DETOXIFYING SYSTEM



## DETOXIFYING ENVIRONMENTAL DAMAGE RECOVERY SHAMPOO

### DESCRIPTION

IT DELICATELY CLEANS HAIR AND SCALP, HELPING ELIMINATE SMOG, DUSTS, PARTICULARLY TOUGH SALINE RESIDUES AND THOSE FROM HARD WATER. THANKS TO CHELATING ACTION, HAIR IS LEFT BRIGHT AND FULL OF BODY. IT ALLOWS FOR A CORRECT AND DELICATE REMOVAL OF **DETOXIFYING ENVIRONMENTAL DAMAGE RECOVERY MUD**.

### PROPERTIES

IT CARRIES ON AN ESSENTIAL ANTI-POLLUTION ACTION. IT IS A USEFUL ALLY FOR FIGHTING LONG-TERM EFFECTS OF EXPOSURE TO CHLORINE AND COPPER-RICH WATER SUCH AS FOUND IN SWIMMING POOLS. IT HELPS TO DELICATELY ELIMINATE UNPLEASANT RESIDUES LEFT BY PARTICULARLY HARD WATER. THE PRESENCE OF SPECIAL SALTS BRINGS BACK HAIR'S NATURAL MINERAL COMPOSITION FIGHTING THE COLOURING EFFECTS OF SOME SUBSTANCES PRESENT IN WATER.

### ACTIVE INGREDIENTS

*EDTA* AND *PHYTIC-ACID* JOIN TOGETHER TO REMOVE SALTS ACCUMULATED ON HAIR. *ATOLIGOMER* IS MADE UP OF SUBSTANCES DERIVED FROM SEA SALT: IT HELPS RENEW THE CORRECT AMOUNT OF MINERALS FOR THE HAIR AFTER THE MUD ACTION.

### HOW TO USE

GENTLY MASSAGE INTO WET HAIR, RINSE AND REPEAT APPLICATION IF NECESSARY.

### RESULTS

TOGETHER WITH **DETOXIFYING ENVIRONMENTAL DAMAGE RECOVERY MUD** IT LEAVES HAIR PERFECTLY CLEAN AND FULL OF BODY THANKS TO THE DEEP REMOVAL OF ALL EXISTING IMPURITIES. STRESSED HAIR APPEARS HEALTHY AND SHINY ONCE AGAIN.

### PACKAGE

250 ml 8.45 FL.OZ.

naturaltech™

# DETOXIFYING SYSTEM



## DETOXIFYING ENVIRONMENTAL DAMAGE RECOVERY CONDITIONER

### DESCRIPTION

A MOISTURISING AND CONDITIONING CREAM THAT RESTRUCTURES HAIR STRESSED BY POLLUTING AGENTS. IT GIVES LONGER-LASTING PROTECTION TO HAIR THAT LOOKS HEALTHY AND STAYS CLEAN LONGER.

### PROPERTIES

IT DEEPLY MOISTURISES AND PROTECTS HAIR. IT SURROUNDS HAIR WITH A PROTECTIVE SHIELD, DEFENDING IT FROM POLLUTING AGENTS AND DAMAGING SUBSTANCES SUCH AS CALCIUM AND MAGNESIUM SALT, PRESENT IN HARD WATER OR ENRICHED WITH CHLORINE AND COPPER (LIKE SWIMMING POOL WATER). IT ACTIVELY FIGHTS AGAINST THE FORMATION OF FREE RADICALS KEEPING HAIR HEALTHY AND VITAL.

### ACTIVE INGREDIENTS

*CHITOSAN* ALLOWS THE FORMATION OF A PROTECTIVE FILM ON HAIR, PREVENTING THE ABSORPTION OF SUBSTANCES PRESENT IN SMOG, AND FIGHTING THE FORMATION OF FREE RADICALS AND HAIR DEHYDRATION.

*CHROMAN* EXERTS AN INTENSE ANTI-OXIDANT ACTION AGAINST THE EFFECTS OF SMOG AND FREE RADICALS.

*LIPOSOMES* EASILY JOIN WITH KERATIN THAT STAY ATTACHED EVEN AFTER RINSING. THEREFORE, THEY ALLOW THE CHROMAN, CONTAINED IN LIPOSOMES TO PROLONG ITS PROTECTIVE ACTION.

### HOW TO USE

COAT EVENLY ONTO WIPED HAIR, COMB THROUGH AND LEAVE TO ACT FOR 5 MINUTES. RINSE THOROUGHLY AND DRY.

### RESULTS

HAIR HAS LONG-LASTING PROTECTION AGAINST POLLUTING AGENTS PRESENT IN THE ENVIRONMENT, APPEARING SOFT, SILKY TO THE TOUCH AND EASY TO COMB.

### PACKAGE

150 ml 5.07 FL.OZ.

naturaltech™